

# The Seven Segments at the General Election

Zoom Webinar | 11am-11:45am |  
Thursday 27<sup>th</sup> June





# Introducing the Seven Segments

# Our unique lens - The British Seven Segments

- The 'British Seven' segments were formulated in our 'Britain's Choice' report, published in 2020
- They are created entirely from questions around five areas of core beliefs, drawn from social psychology: group identity and tribalism, perceived threat, parenting style and authoritarianism, moral foundations, personal agency and responsibility
- No demographic information (race, class, or gender) is used for the segmentation, though the segments created by this process often have demographic differences
- Segmentation shows that values and beliefs are powerful in influencing how individuals form opinions about issues and their behaviour. Often, the segments are more predictive of beliefs than any other metric



# The British Seven Segments

## Progressive Activists



...a group for whom politics is an important part of their identity and who seek to correct longstanding injustices

## Civic Pragmatists



...a group that cares about others, at home or abroad. They wish for less conflict and more compromise

## Disengaged Battlers



... a group that are just getting by. They blame the system for its unfairness, but not other people

## Established Liberals



...a group that has done well and means well towards others, but also sees a lot of good in the status quo

## Loyal Nationals



...a patriotic group, who worry that our way of life is threatened and also feel our society has become more unfair

## Disengaged Traditionalists



...a group that values a well-ordered society and prides in hard work. They want strong leadership that keeps people in line

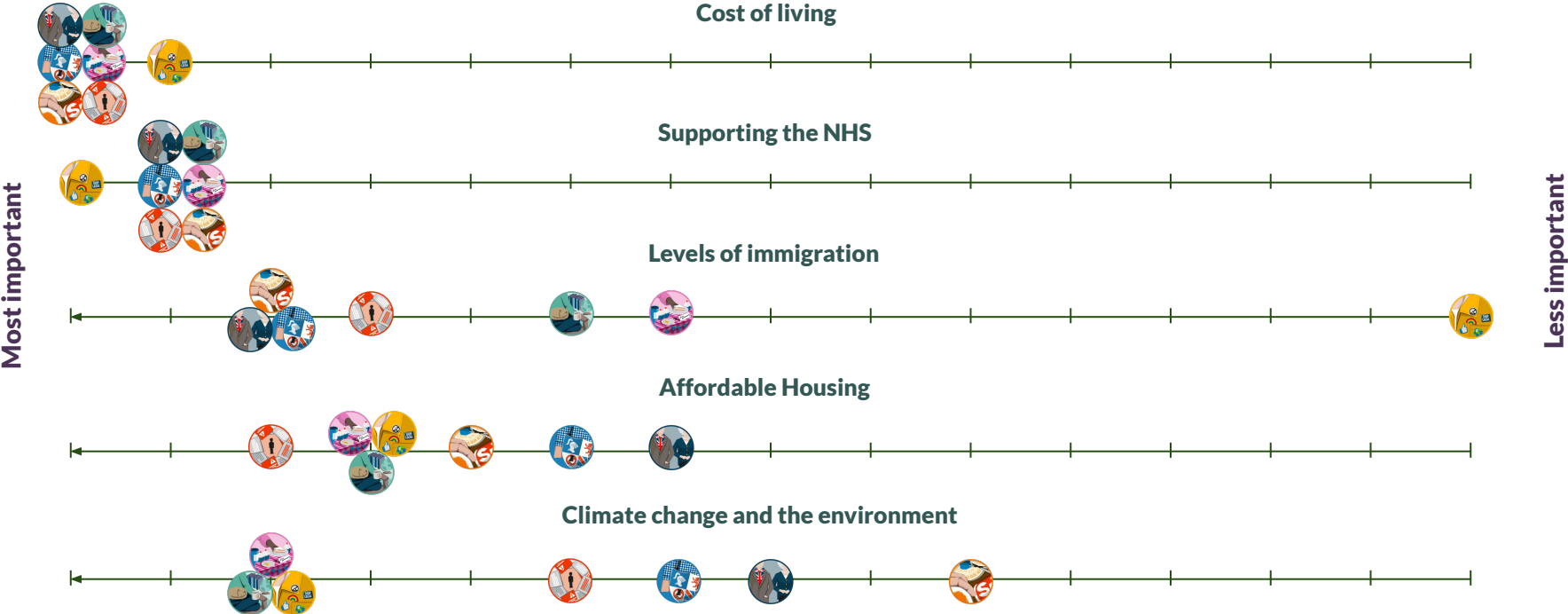
## Backbone Conservatives



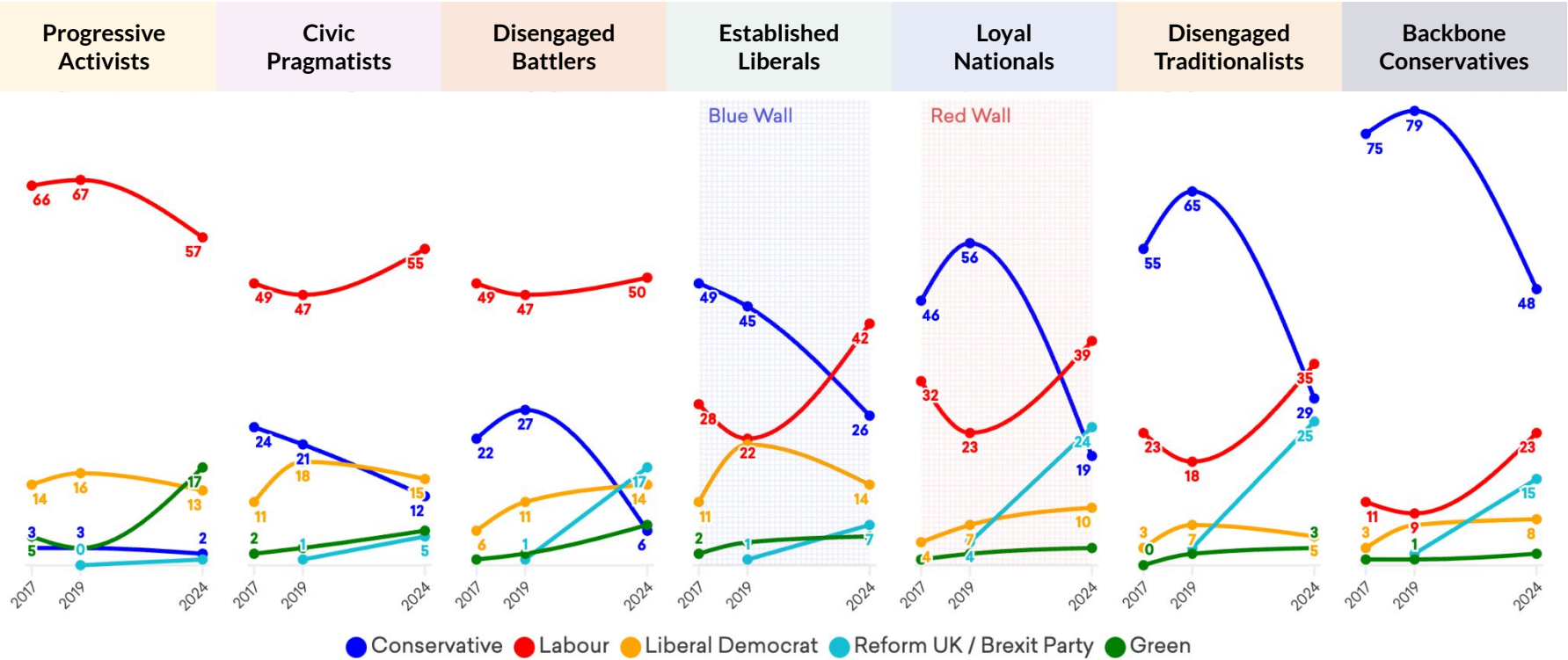
... a group who are proud of their country, optimistic about Britain's future outside of Europe, and who keenly follow the news

# The public's top issues by segment

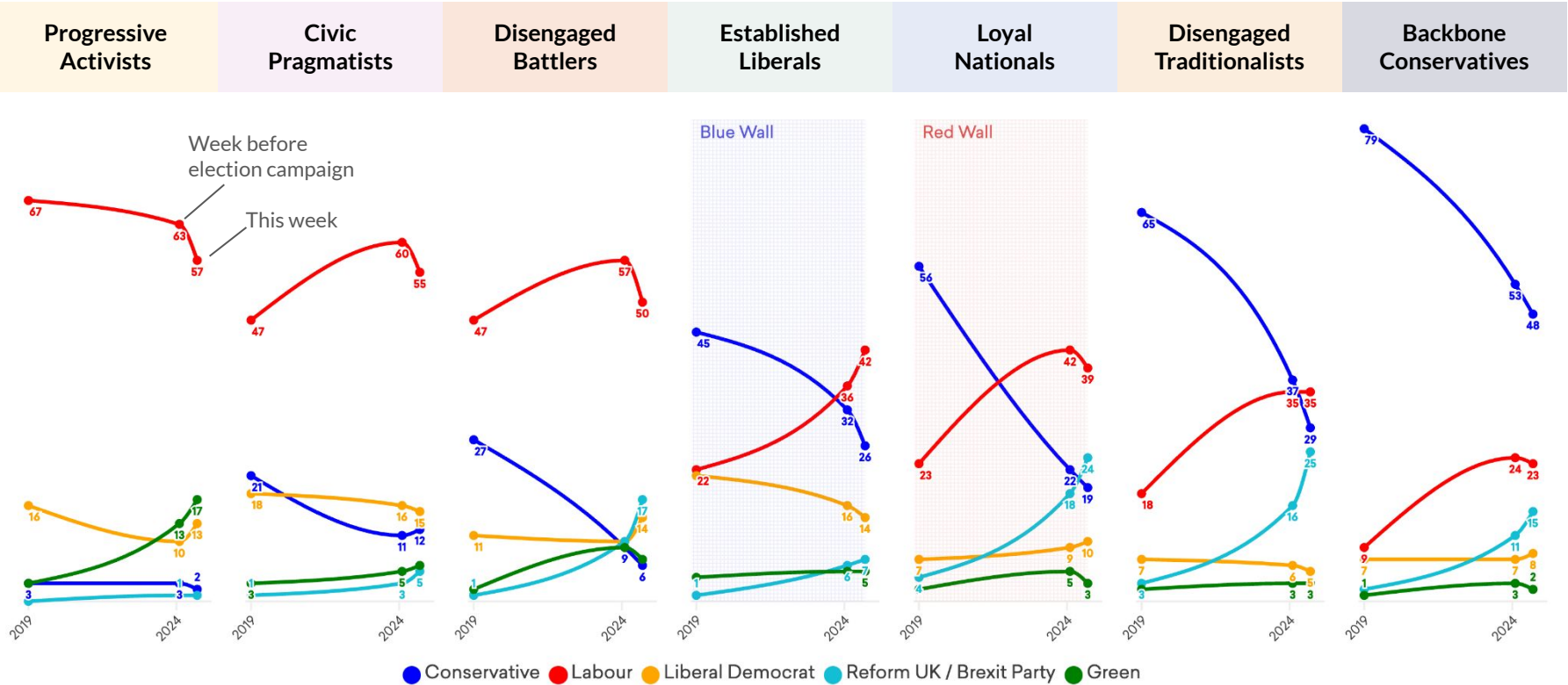
Thinking about the next General Election, which of the following issues are most likely to impact your vote? Please select up to three



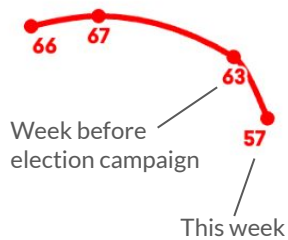
# The seven segments at a General Election



# The seven segments at a General Election

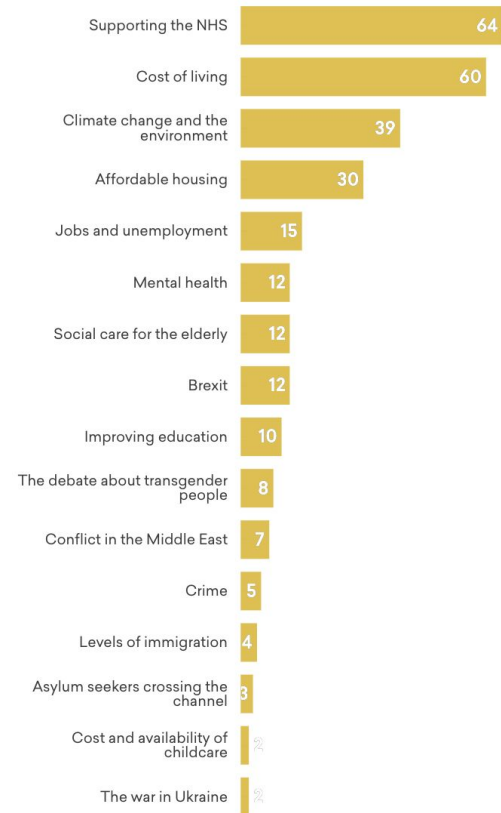
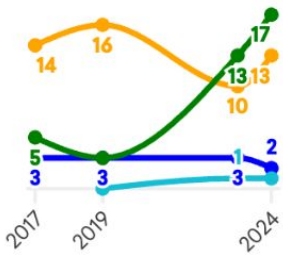


# Progressive Activists



Going into the election, Progressive Activists were the only segment to have swung away from the Labour Party since 2019, and this has continued in the election campaign, as more of them have moved to the Green Party and the Liberal Democrats.

They are the only segment to list the NHS as their top issue, although they also care more than average about the cost of living, climate change, and affordable housing. They rank immigration far lower on their list of concerns than any other segment does.



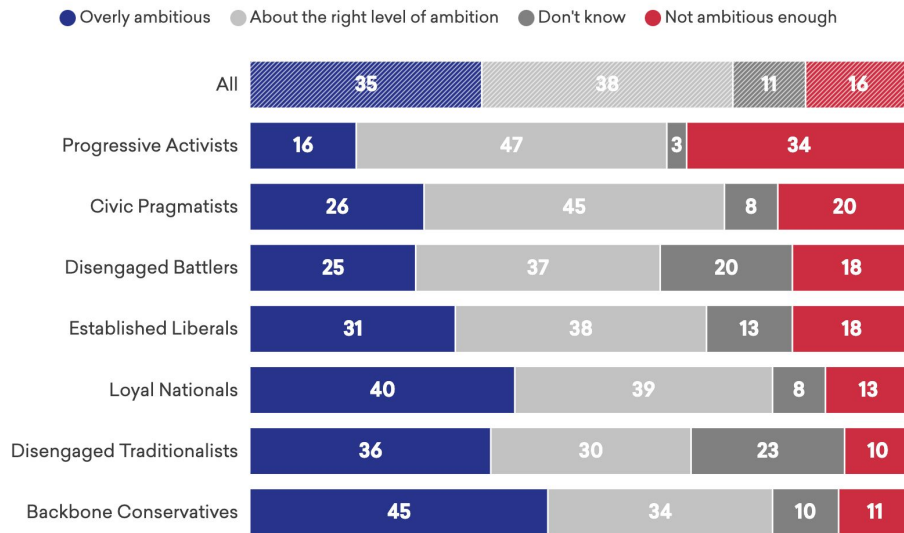


# Progressive Activists

Progressive Activists are unique in how many of them think that Labour's proposals at this general election are not ambitious enough.

Whereas other segments will often say in focus groups that they wished politicians would promise less and deliver more, Progressive Activists would like to see Labour promising bolder action - particularly on issues such as inequality and climate change.

## And having seen Labour's six pledges, do you think they are...

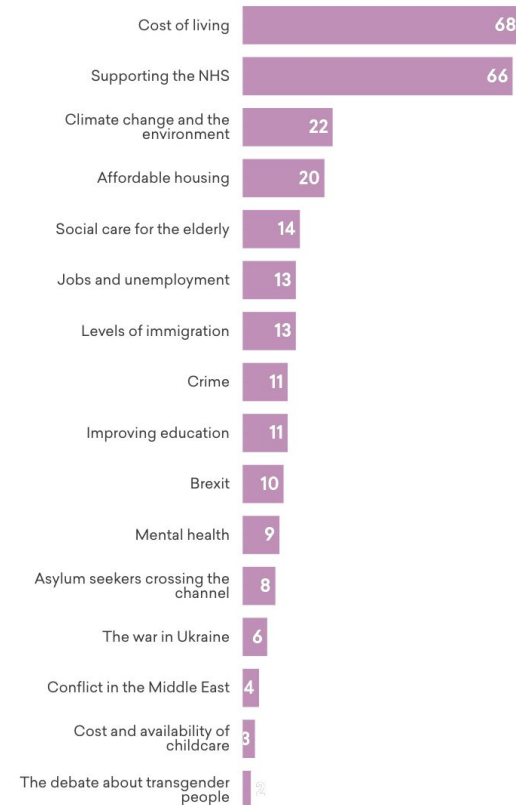
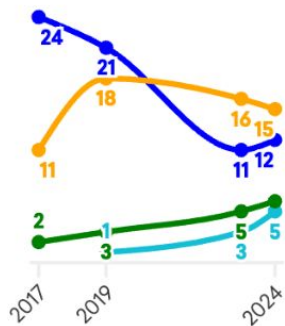


# Civic Pragmatists



The Labour Party have made good progress with Civic Pragmatists since 2019, and in many of our polls Labour performs better with Civic Pragmatists than any other segment. That said, Civic Pragmatists' support for Labour has fallen 5 points since the start of the campaign.

Civic Pragmatists' top issues are the same as Progressive Activists', although they care more about immigration than Progressive Activists do, and prioritise mental health slightly less.

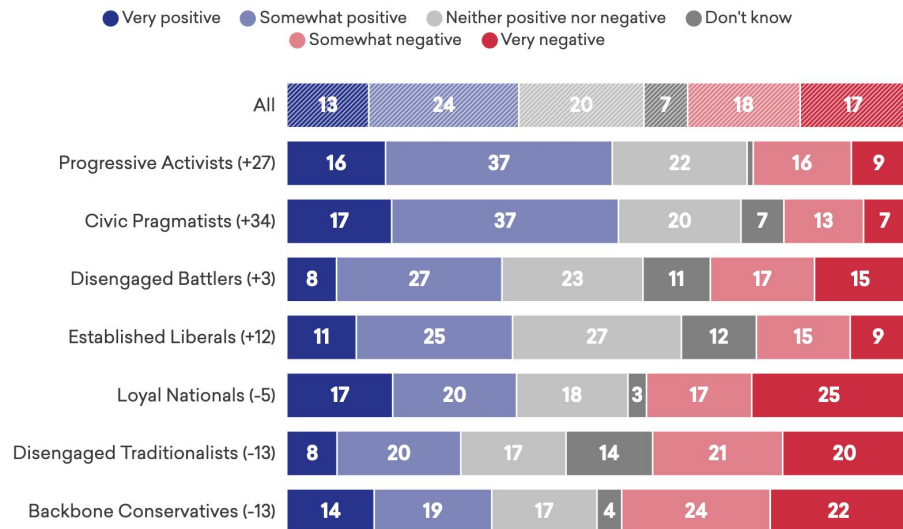


# Civic Pragmatists

Civic Pragmatists have the most positive view about Keir Starmer of any of the segments.

In focus groups we often hear from Civic Pragmatists that they quite like the idea of a “boring” Prime Minister, and think that Starmer would do a good job at restoring order and stability to politics.

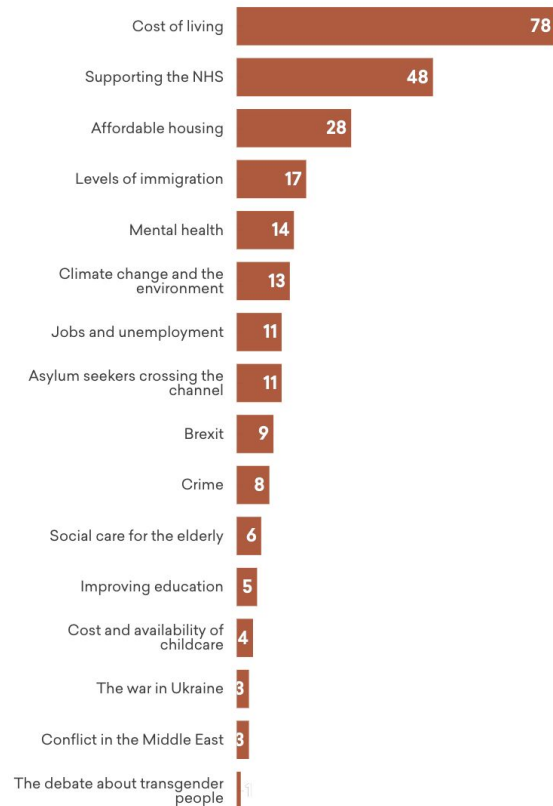
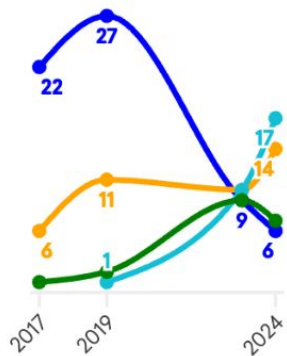
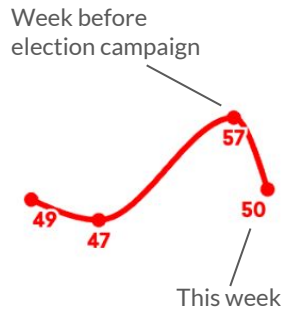
## In general, what is your view of Keir Starmer?



# Disengaged Battlers

Disengaged Battlers are a solidly Labour voter group who have low turnout at General Elections. During the course of this campaign, however, the proportion of Disengaged Battlers intending to vote Labour has fallen seven points, as their Reform vote share has almost doubled.

More than any other segment, Disengaged Battlers list the cost of living as their top issue. They are also uniquely highly concerned about affordable housing and mental health.



# Disengaged Battlers

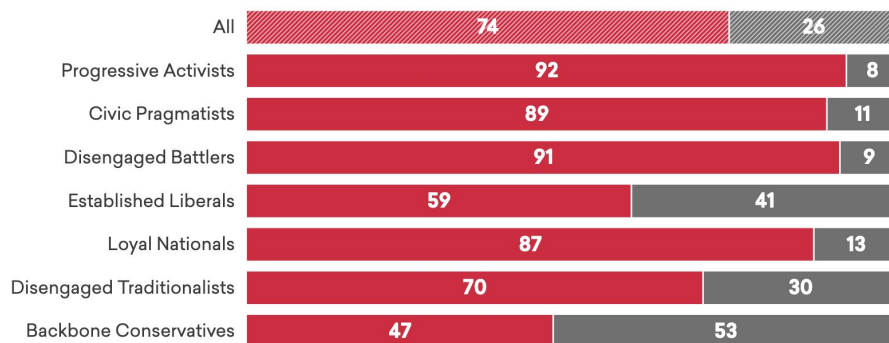
Disengaged Battlers are completely disillusioned with politics.

While 74 per cent of the country think that our government is rigged to serve the rich and powerful, this rises to 91 per cent for Disengaged Battlers.

For other left-leaning segments, a sense that the system is rigged is a motivation to vote. But for Disengaged Battlers, this leads to them having among the lowest predicted turnout of any of the segments.

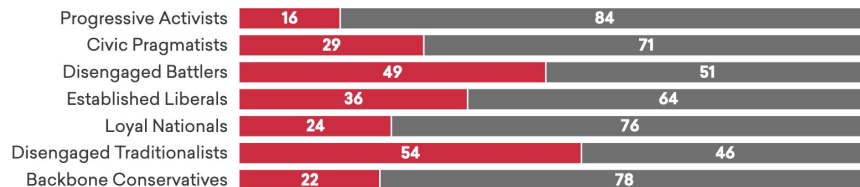
## Which do you agree with more?

- The British government is rigged to serve the rich and influential
- The British government mostly reflects the will of the British people



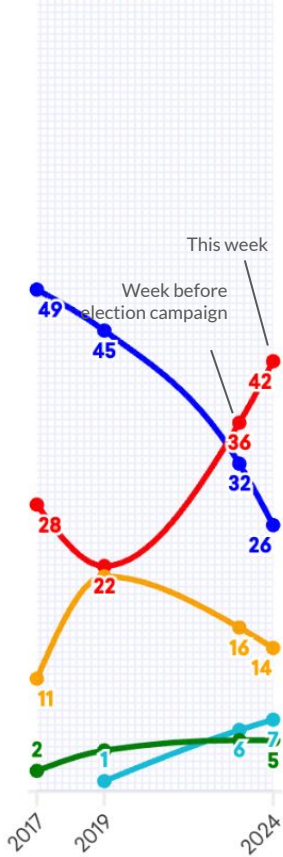
## Modelled turnout by segment

- Will not vote
- Will vote



# Established Liberals

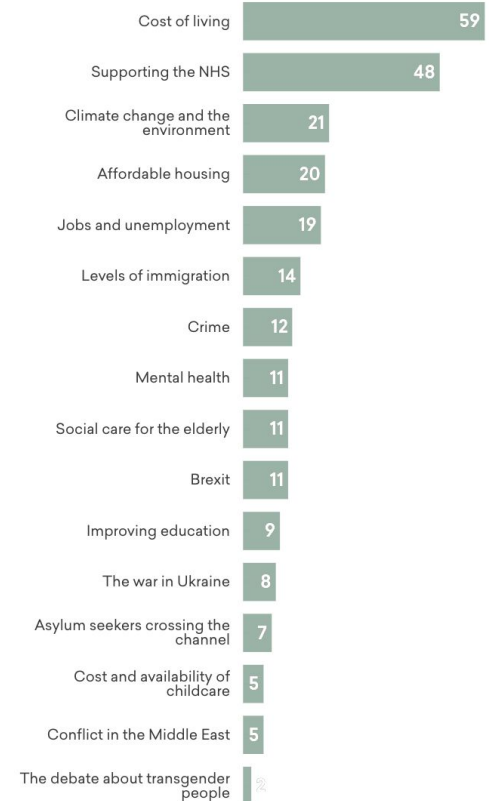
## Blue Wall



Established Liberals have been moving away from the Conservatives for many years now, and the election campaign period has, if anything, accelerated this.

They have not been attracted to Reform in the same way as other segments, and they are the only segment where Labour has made progress throughout the campaign - increasing their vote share with Established Liberals from 36 to 42 points.

The Conservative vote share with Established Liberals now stands at half of what it was in 2017.

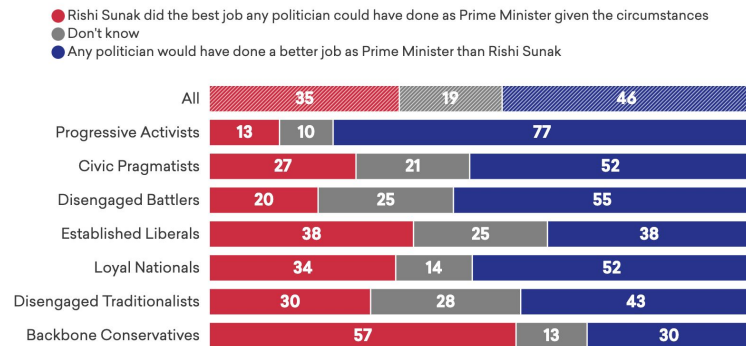


# Established Liberals

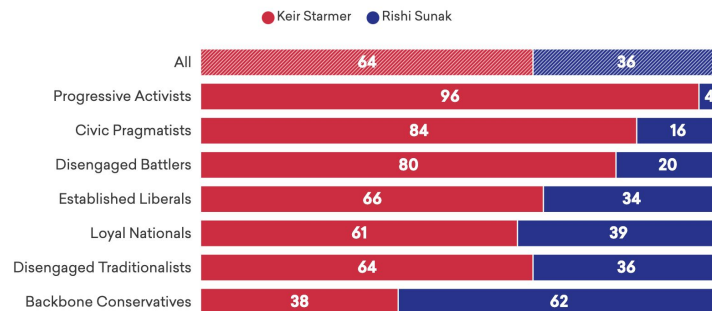
With the exception of Backbone Conservatives, Established Liberals are actually more sympathetic to the idea that Sunak inherited an impossible situation than any of the other segments are.

The issue for the Conservatives is that, despite having some sympathies for Sunak, Established Liberals overwhelmingly want Starmer to be Prime Minister, by almost two to one.

## Which of the following comes closest to your view?

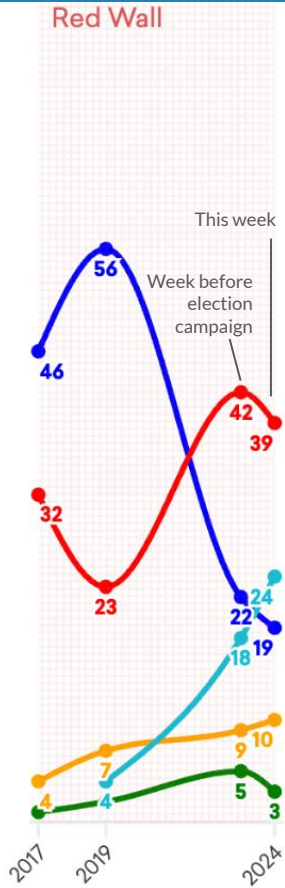


## After this General Election, who do you most want to be Prime Minister?



# Loyal Nationals

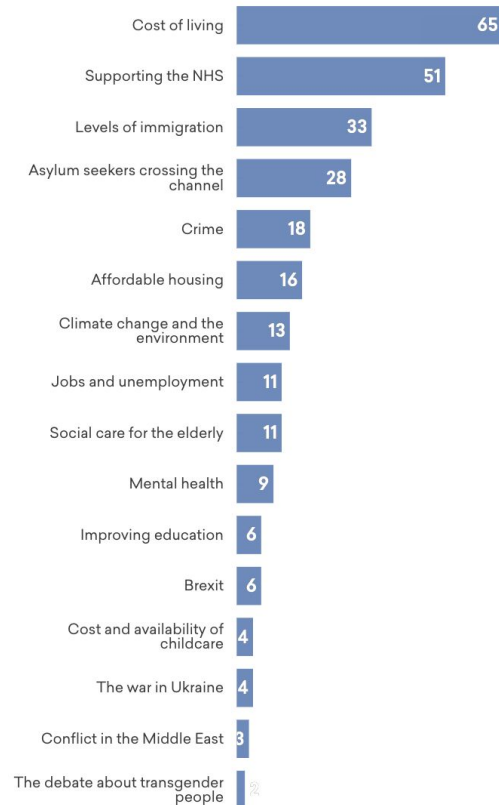
Red Wall



At the start of the campaign, the Conservatives were narrowly ahead of Reform UK with Loyal Nationals, but we have since seen a crossover.

Now, a quarter of Loyal Nationals intend to vote for Reform UK, a high vote share that has hurt both Labour and the Conservatives' performance with this segment.

One reason for this: Loyal Nationals are among the most concerned about immigration of all the segments.



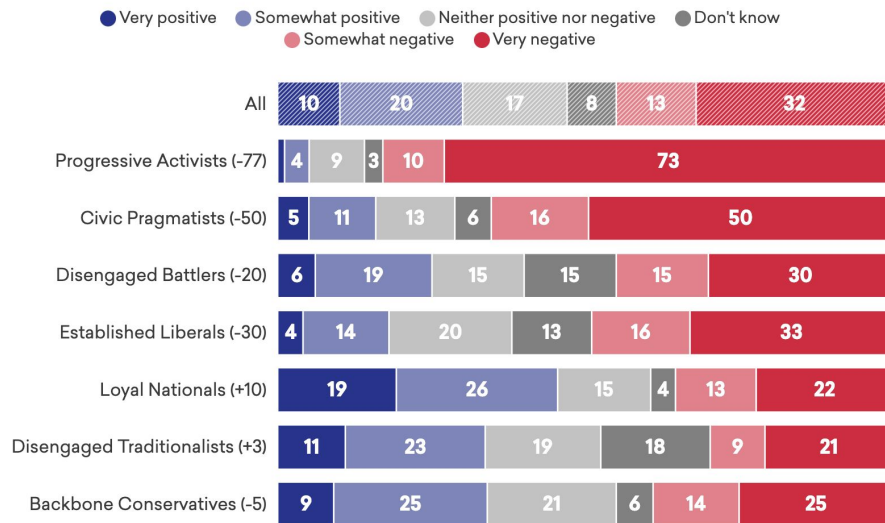


# Loyal Nationals

Loyal Nationals have a far more positive view of Nigel Farage than any other segment, and are one of two segments with a net positive view of him.

In focus groups, Loyal Nationals will say that they think Nigel Farage represents change and doesn't seem like an "establishment" politician. They also say that he answers questions more directly, and think he is more aligned with them on immigration than Starmer or Sunak.

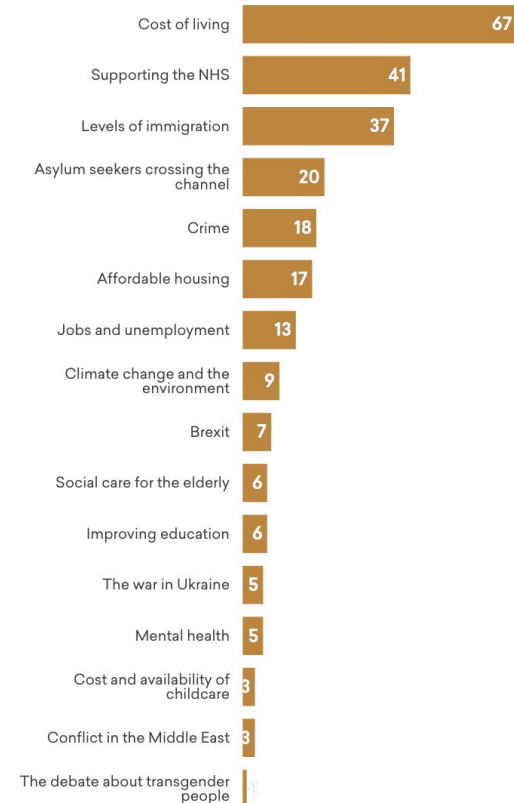
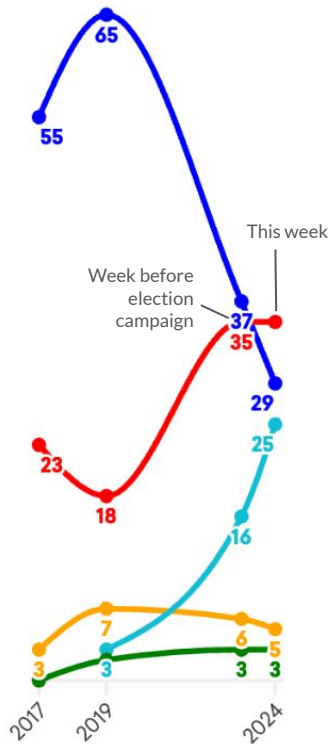
## In general, what is your view of Nigel Farage?



# Disengaged Traditionalists

The election campaign has seen the Conservative Party move into second place with Disengaged Traditionalists, mostly as a result of a significant surge in support for Reform UK among this segment.

This group also has high concern about immigration, asylum seekers and crime - although they are among the least likely to vote at general elections. And they are the segment least likely to rank climate change as a top issue affecting their vote.



# Disengaged Traditionalists

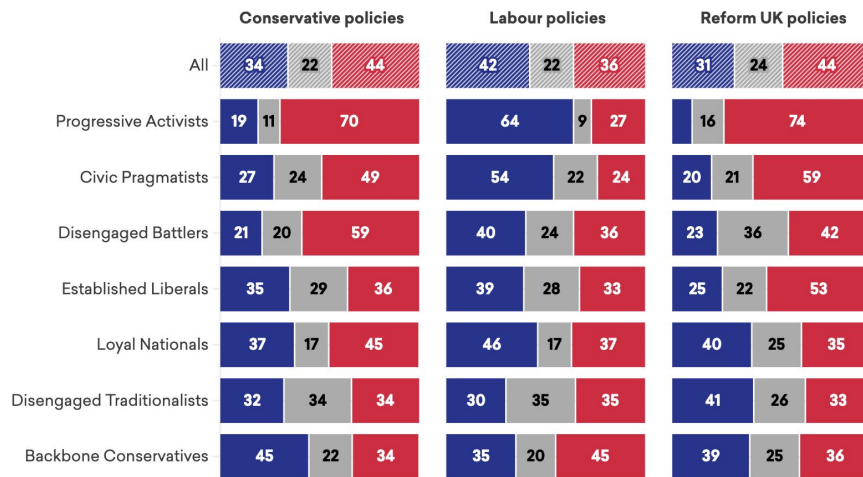
Although Disengaged Traditionalists are the segment least likely to vote, they are the segment most likely to vote for Reform UK.

They are the segment most likely to think that Reform's policies are aimed at people like them.

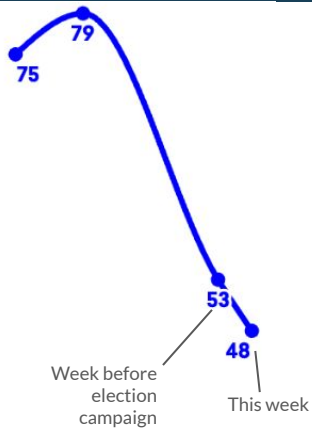
The big difference between Disengaged Traditionalists and Loyal Nationals is that, unlike the Loyal Nationals, Disengaged Traditionalists think Labour's policies are not for them.

Thinking about this set of policies as a whole, would you say they...

● Are aimed at people like me ● Don't know ● Are not aimed at people like me

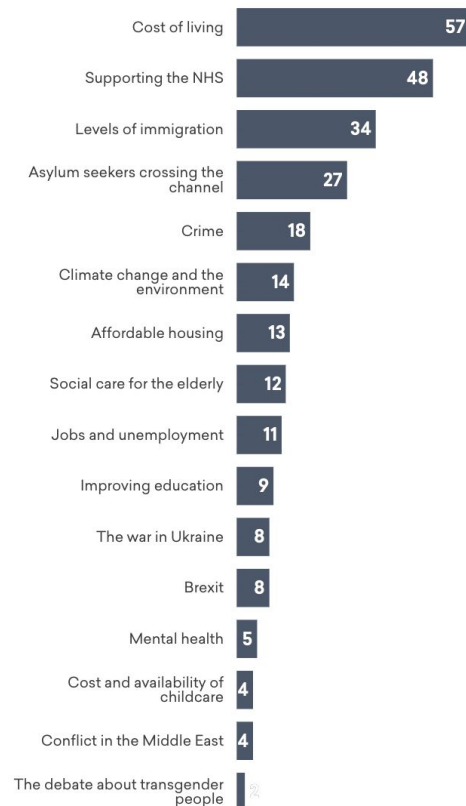
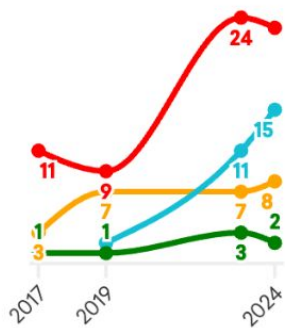


# Backbone Conservatives



Backbone Conservatives are the only segment where the Conservative Party are in the lead, although even in this segment the Conservatives have not been immune from the Reform UK bounce.

Their top issue is the cost of living - although they are less likely to list this as important than any other segment. They are also the segment most concerned about social care.

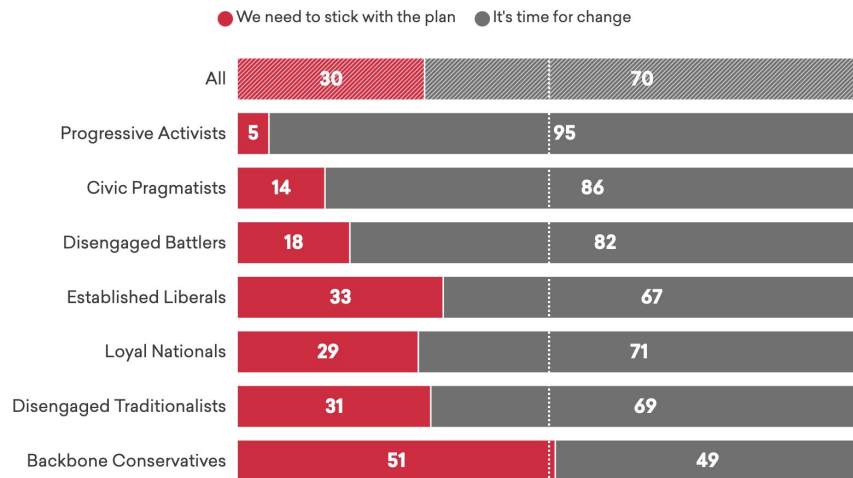


# Backbone Conservatives

Part of the explanation for Backbone Conservatives' loyalty to the Conservative Party is their approach to change.

They are the only segment who do not tend to think it is time for change. In focus groups we often hear from this segment that they are worried about the impacts of a Labour government, and many have negative memories from previous Labour administrations. They agree with Conservative messages that we need to stick with the plan.

## Which of the following comes closest to how you are feeling about the next General Election?



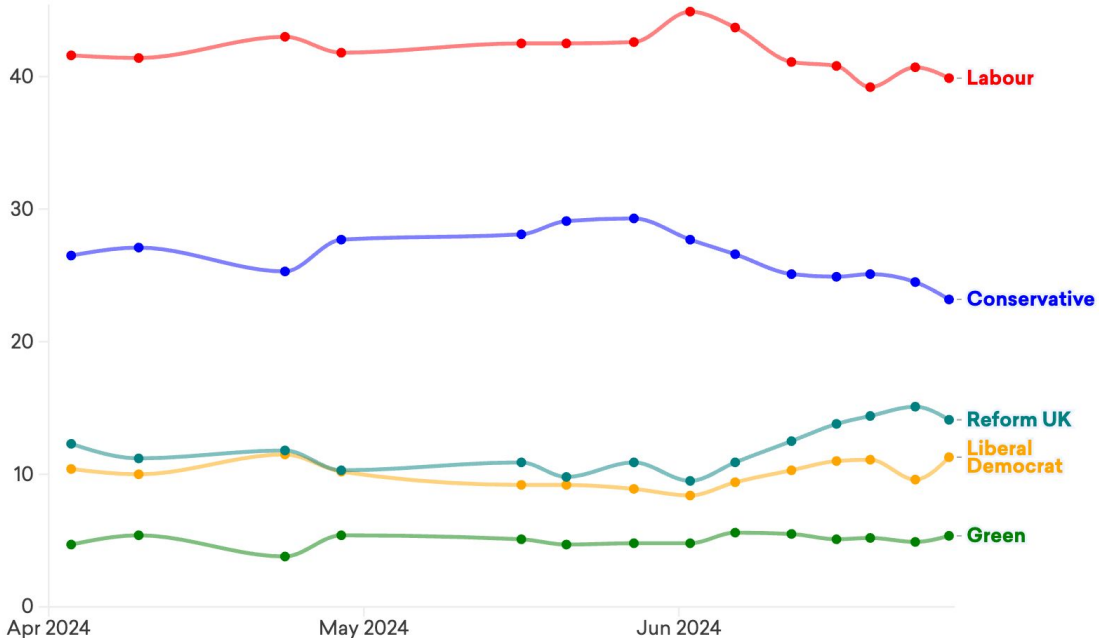


# The state of the race

# The Conservatives' worst week

## Comparable voting intention

New methodology applied to previous polls

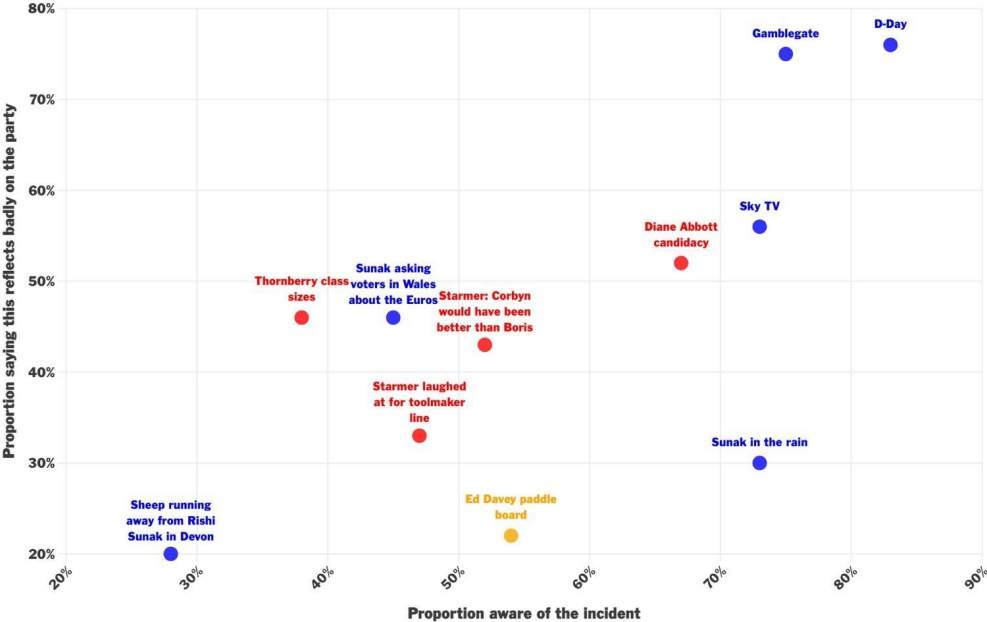


This week, while changes in the polls were small, the Conservatives hit the lowest vote share we have ever recorded - at 23 percentage points and giving Labour a 17 point lead.

Source: More in Common • Latest fieldwork: 24-26 June 2024

# Conservative gaffes have cut through the most

## 2024 GENERAL ELECTION GAFFE-O-METER



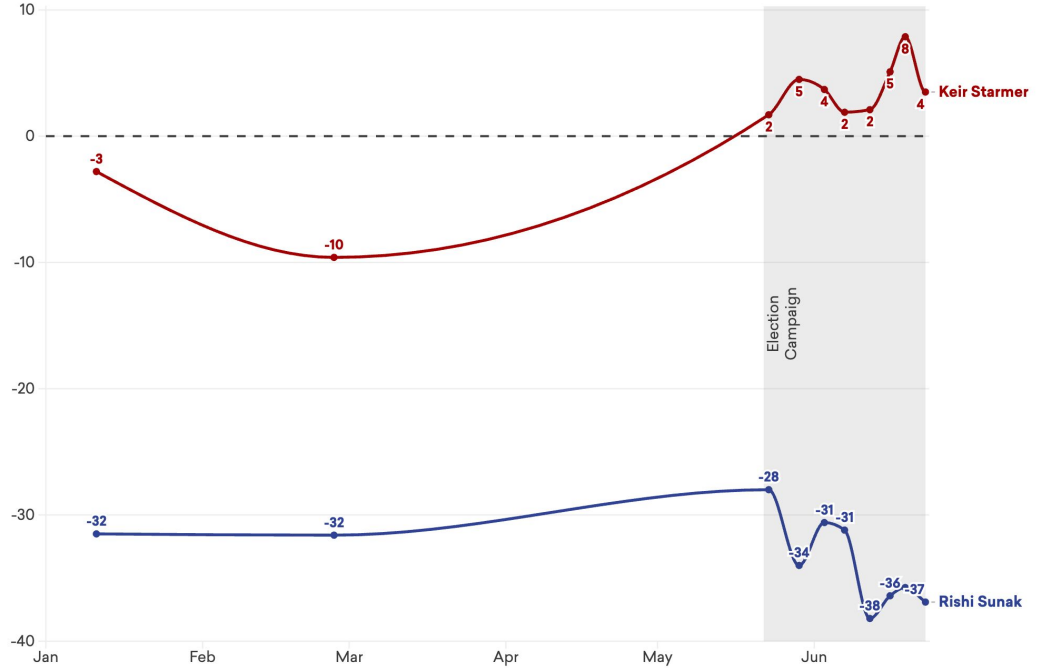
Part of the problem for the Conservatives is that a number of high-profile gaffes this campaign have cut-through.

The biggest problems for the Conservative campaign are the scandal surrounding bets placed on election date, and Rishi Sunak leaving D-Day early, which come up clearly both in our polling and our focus groups.



# Gap in approvals remains high

**Party Leader approval tracker**  
Net approval rating



All this has resulted in a positive net approval rating for Starmer, and an approval rating for Sunak that has only deteriorated as the campaign has progressed.

# Starmer is a rare net-popular politician - and Farage is more popular than Sunak

## In general, what is your view of the following politicians?

● Very positive   ● Somewhat positive   ● Neither positive nor negative   ● Don't know  
● Somewhat negative   ● Very negative

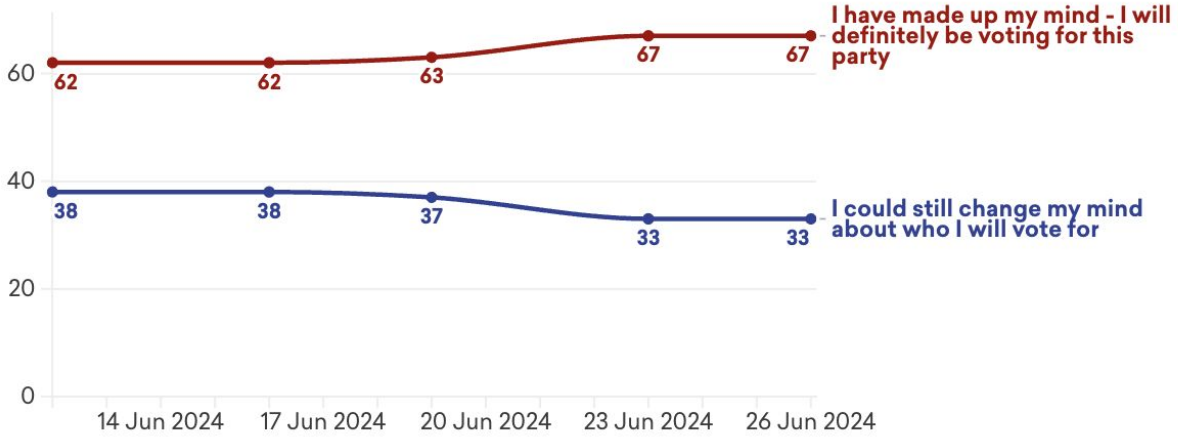


Looking at a wider set of politicians, Starmer is unique in having the only positive approval rating.

Nigel Farage is unpopular with the public, although it is notable that his net approval is higher than that of Sunak.

# People are making up their minds

Thinking about the General Election in July, which of the following comes closest to your view?



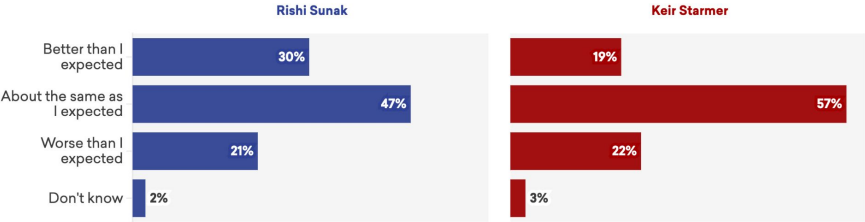
As the campaign has progressed, people have become more certain about how they will vote - with 67% now saying they have made up their minds, compared to 62% at the start of the campaign.

# The final debate

## In general, who would you say won the debate tonight?



## Would you say that each of the party leaders performed better or worse than you had expected they would going into tonight's debate?



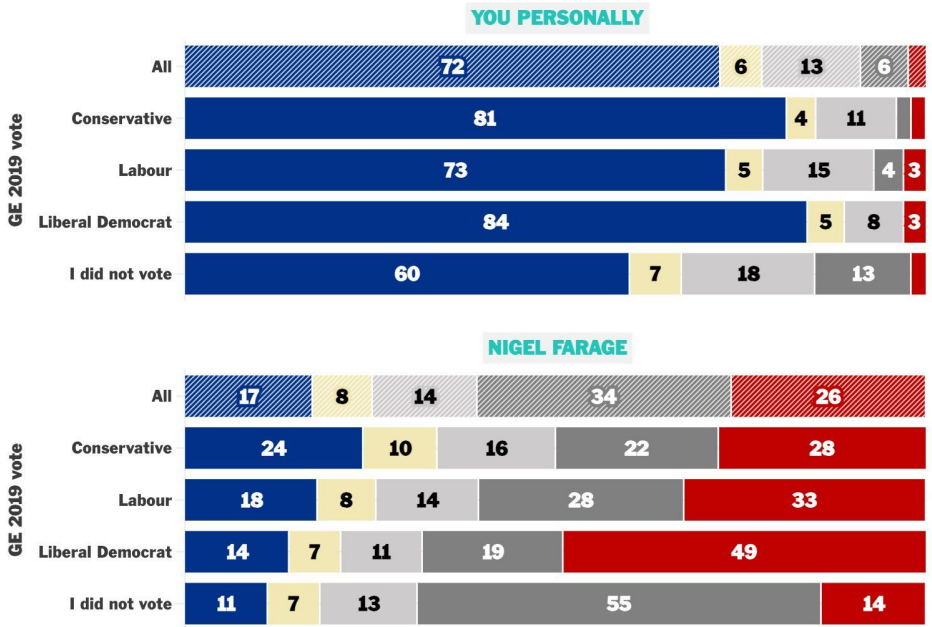
Our snap poll immediately after the final leaders' debate found that people tended to think that Starmer had won.

However, beneath these numbers we can see that three in ten people thought Sunak exceeded their expectations, whereas only 19% said the same for Starmer.

# Has Reform UK got a Russia problem?

Which side in the conflict between Ukraine and Russia do [you/you think Farage] sympathise[s] with more?

● The Ukrainian side 
 ● Both sides equally 
 ● Neither side 
 ● Not sure 
 ● The Russian side



In the last few days of polls, Reform UK seems to have struggled to maintain the momentum they had gathered in the first few weeks of the campaign.

Part of this might be to do with their leader’s comments on Russia this week, with a quarter of Britons thinking that Farage sympathises with Russia in the war with Ukraine.



# **Focus Group Weekly Wash-Up**

# Basildon and Billericay - Debate focus group

Mix of people who prefer Starmer and those who prefer Sunak

**"I wanted fireworks and we didn't get them" Holly**

**"Starmer is a terrible debater. He's been battered in the debates...and not because Sunak is groundbreaking" Ed**

**"It's the same old answers to the same old questions from both of them" Holly**

**"Sunak was more lit up, Starmer more behind" Ahkil**

**"Keir Starmer's responses made me want to vote Tory and I've never voted Tory"**

**"The fact that Keir Starmer gave away the game to this charlatan is frustrating as hell"**

# East Anglia

## Conservative to Green voters

### Many voted Conservative in 2019 for Boris Johnson

"He was likeable, even if you didn't like the Conservatives" *Damian*

### Concern about Labour

"Look what the Conservatives have done. 18 and a half percent increase for pensions in the last 3 years. Labour are not going to do that." *Phil*

### Climate an important issue

"It's always going to be an important issue, because it's for our future and for everyone else" *Betsy*

### ... although not climate obsessives

"I know I need to help the environment, but you give me a bag of plastic straws for 50p, and a pack of paper ones twice the price, I'm going for the cheaper ones" *Jacob*

### Lack of knowledge about detail of Green policy

"They still haven't said anything about taxation, or how they are going to fix the economy, or anything like that" *Arielle*

### Strong anti-politics mood

All major parties tarred with the same brush





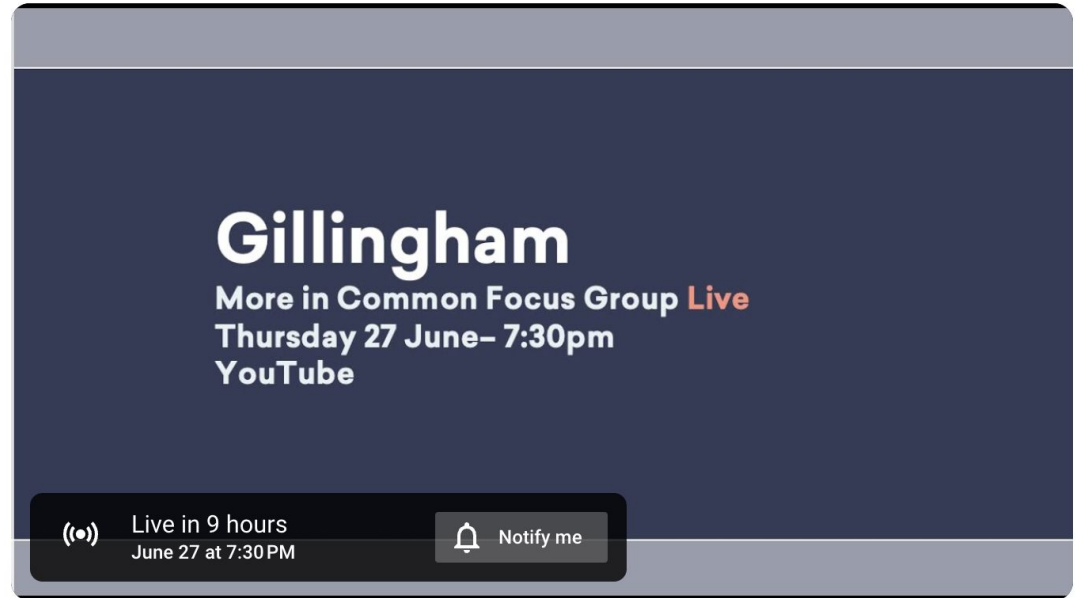
**Coming up**

# TONIGHT - Focus Group live



Set yourself a reminder:

[https://youtube.com/live/0ZUauodB  
b-0](https://youtube.com/live/0ZUauodBb-0)



## MIC Focus Group Live - Gillingham

Unlisted



More i...  
187...

Analytics

Edit video

Share

Save



1 waiting Scheduled for Jun 27, 2024

# Election week

*Our final MRP seat prediction of the campaign*  
**Wednesday**



Final voting intention polls - including  
Wales, Scotland, and constituency polls  
**Throughout the week**

Our last webinar of the campaign, with  
all our final predictions and an  
explanation of what has happened  
**Wednesday evening**

Final focus group live - with Whitby  
Women  
**Wednesday evening**

**And follow us on X for live updates  
on election night**

@LukeTryl      @Anouschka\_Rajah  
@BurnsConleth      @jenna\_c\_mic  
@jim\_blagden      @edhodgsoned

Luke Tryl  
UK Director  
[www.moreincommon.com](http://www.moreincommon.com)



More in  
Common